

COOPER TEXAS REAL ESTATE HOLDINGS, LLC, 174.77 ACRES VOL. 393, PG. 478 O.P.R.E.C.T.

R.E. MENOTTI 152.00 ACRES VOL. 282, PG. 261 O.P.R.E.C.T.

R.E. MENOTTI 84.40 ACRES VOL. 314, PG. 371 O.P.R.E.C.T.

J.L. MENOTTI 119.88 ACRES VOL. 281, PG. 162 O.P.R.E.C.T.

SOLD

SOLD

SOLD

TR 4  
63.08 Ac.

TR 13  
50.25 Ac.

TR 22  
59.62 Ac.

TR 3  
37.04 Ac.

TR 11  
58.03 Ac.

TR 14  
51.58 Ac.

TR 29

GC & SF RR CO BLOCK F SURVEY NO. 13 ABSTRACT NO. 888

GC & SF RR CO BLOCK F SURVEY NO. 12 ABSTRACT NO. 2352

SOLD

TR 12  
36.15 Ac.

SOLD

TR 2  
29.26 Ac.

SOLD

SOLD

SOLD

SOLD

TR 30

SOLD

TR 10  
47.39 Ac.

TR 15  
60.28 Ac.

SOLD

TR 21  
53.04 Ac.

TR 30

TR 1  
43.39 Ac.

SOLD

TR 6  
64.44 Ac.

TR 10  
47.39 Ac.

TR 15  
60.28 Ac.

GC & SF RR CO BLOCK F SURVEY NO. 17 ABSTRACT NO. 890

SOLD

TR 19  
37.09 Ac.

SOLD

TR 20  
92.72 Ac.

TR 35

GC & SF RR CO BLOCK F SURVEY NO. 16 ABSTRACT NO. 1817

HOUSE CABIN METAL BARN

20-FT ROAD EASEMENT ALONG THE NORTH SIDE OF THE WATER EASEMENT (EXHIBIT "C" PER DEED)

"MULTI USE" EASEMENT (EXHIBIT "E" PER DEED)

WATER WELL INTEREST ALL INT. TR 20

10-FT WATER LINE EASEMENT ALONG THE SOUTH SIDE OF THE ROAD EASEMENT (EXHIBIT "D" PER DEED)

M.S. ELLIOT 24.18 ACRES VOL. 372, PG. 405 O.P.R.E.C.T.

TR 8  
42.58 Ac.

TR 9  
70.41 Ac.

TR 17  
40.34 Ac.

SOLD

TR 18  
41.41 Ac.

SOLD

TR 7  
34.81 Ac.

TR 8  
42.58 Ac.

TR 9  
70.41 Ac.

TR 17  
40.34 Ac.

SOLD

TR 18  
41.41 Ac.

N01°19'06"E 480.11' (N00°30'00"E 480.57')

FD. 1/2" S.R. W/CAP "BUSHONG"

COUNTY ROAD 450 (PUBLIC R.O.W.)

JSK MARKETING 1396.84 ACRES VOL. 341, PG. 438 O.P.R.E.C.T.

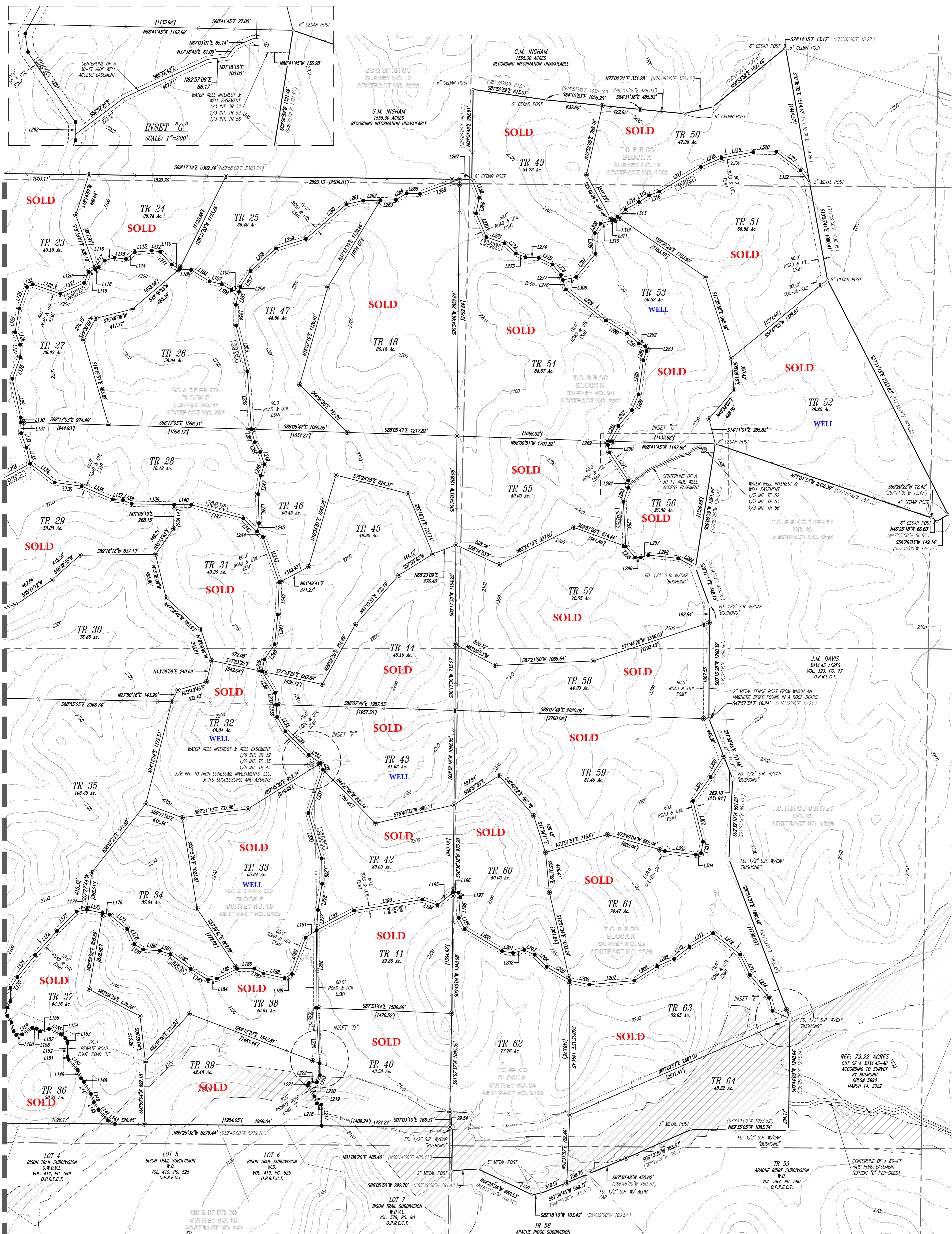
EXISTING WELL ±27' INSIDE FENCE ±15' OUTSIDE TITLE

±1.73-ACRES UNDER FENCE, OUTSIDE OF TITLE

INSET "C"

TR 36

2" METAL POST



**INSET "G"**  
SCALE: 1"=200'

G.C. & S.F. RR CO  
SURVEY NO. 10  
ABSTRACT NO. 2725  
G.M. INGHAM  
1555.30 ACRES  
RECORDING INFORMATION UNAVAILABLE

T.C. R.R. CO  
BLOCK K  
SURVEY NO. 19  
ABSTRACT NO. 1287

G.C. & S.F. RR CO  
BLOCK F  
SURVEY NO. 11  
ABSTRACT NO. 887

T.C. R.R. CO  
BLOCK K  
SURVEY NO. 20  
ABSTRACT NO. 2581

T.C. R.R. CO SURVEY  
NO. 20  
ABSTRACT NO. 2581

J.M. DAVIS  
3034.43 ACRES  
VOL. 383, PG. 77  
O.P.R.E.C.T.

T.C. R.R. CO SURVEY  
NO. 23  
ABSTRACT NO. 1288

T.C. R.R. CO  
BLOCK K  
SURVEY NO. 23  
ABSTRACT NO. 1288

REF: 79.22 ACRES  
OUT OF A 3034.43-AC  
ACCORDING TO SURVEY  
BY BUSHONG  
RPL# 5690  
MARCH 14, 2022

LOT 4  
BISON TRAIL SUBDIVISION  
W.D.V.L.  
VOL. 412, PG. 599  
O.P.R.E.C.T.

LOT 5  
BISON TRAIL SUBDIVISION  
W.D.V.L.  
VOL. 412, PG. 525  
O.P.R.E.C.T.

LOT 6  
BISON TRAIL SUBDIVISION  
W.D.V.L.  
VOL. 419, PG. 525  
O.P.R.E.C.T.

LOT 7  
BISON TRAIL SUBDIVISION  
W.D.V.L.  
VOL. 379, PG. 90  
O.P.R.E.C.T.

TR 59  
APACHE RIDGE SUBDIVISION  
W.D.  
VOL. 369, PG. 580  
O.P.R.E.C.T.

G.C. & S.F. RR CO  
SURVEY NO. 18  
ABSTRACT NO. 891

G.C. & S.F. RR CO  
SURVEY NO. 18  
ABSTRACT NO. 891

APACHE RIDGE SUBDIVISION

CENTERLINE OF A 60-FT  
WIDE ROAD EASEMENT  
(EXHIBIT "E" PER DEED)